



SAFETYSIGN

INDONESIA



SP267



SP268



SP269



SP270

OFFICE YOGA

1 ANGIKAT KEDUA TANGAN ANDA SEPULSAHAN

2 PERANGKAP SUDUT BAHU DAN OTOT TUBUH ANDA

3

4 LETAKKAN SANGKAI PATAH KAKI ANDA, PERANGKAP KEMUDI KE BELAKANG

5 USAP MUKA DAN INGUS ANDA SECARA LEMBUT

www.safetyposter.co.id

This is a product of www.safetyposter.co.id reproduced, distributed, or printed in any form or by any means, without the prior permission of safety poster, is against the law. For more information, please contact: (022) 2015151

OFFICE YOGA DAPAT MEMBANTU ANDA MENYHTILANKAN RASA LELAH, KETEGANGAN OTOT DAN MENJAGA KESEHATAN TUBUH SEPANJANG HARI.



SP271



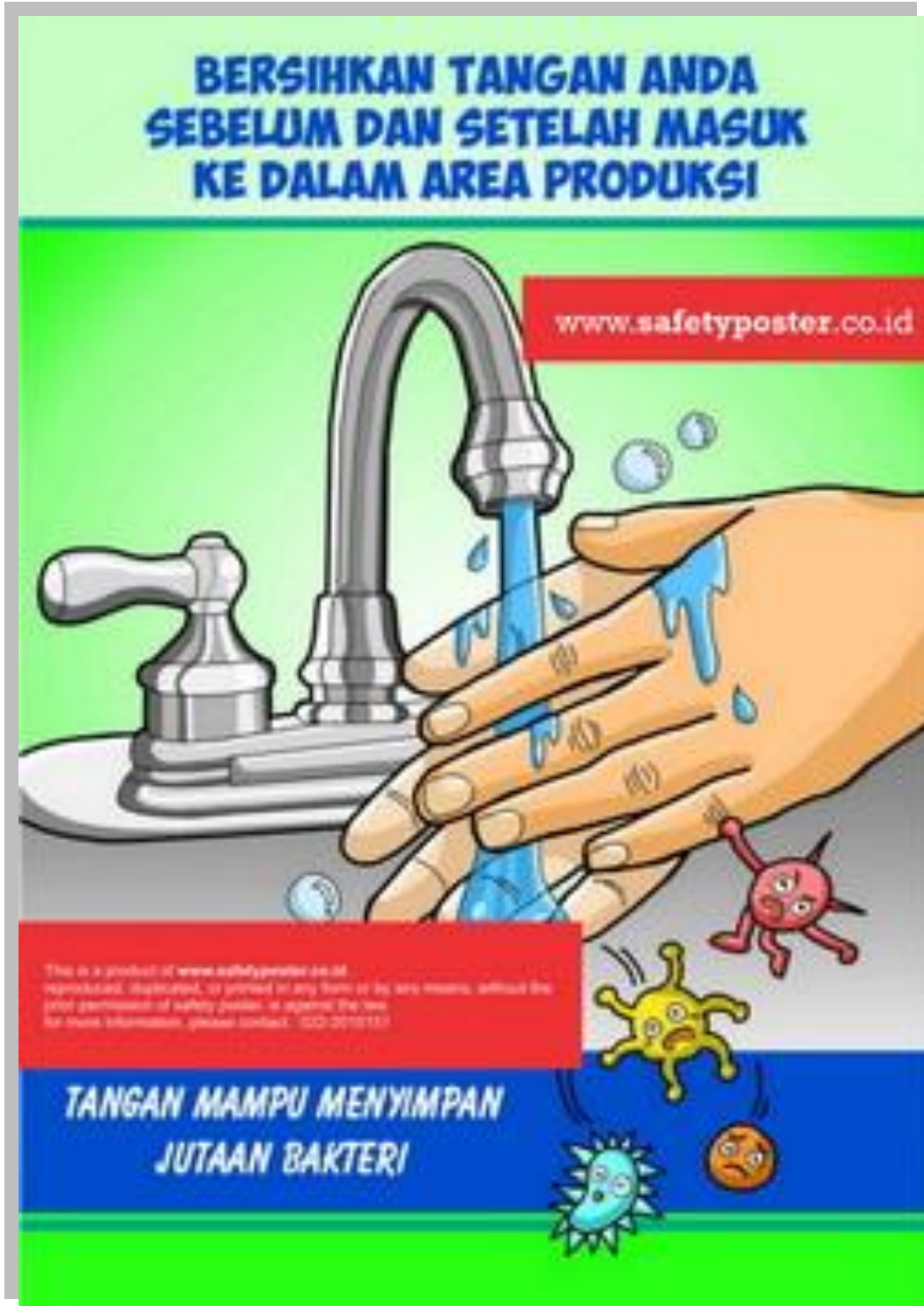
SP272



SP274



SP275



SP276



SP277



SP278



SP279



SP280

LIFERAFT LAUNCHING

Procedures for Launching Inflatable Liferafts

1 AUTOMATIC RELEASE



DO NOT TOUCH
THIS OR SIMILAR DEVICES

2 LOCATE & RELEASE
MANUAL SLIP HOOK



www.safetyposter.co.id

3 LAUNCH LIFERAFT



CHECK PAINTER IS MADE AND CHECK LAUNCH AREA IS CLEAR. THROW LIFERAFT INTO WATER.

4 INFLATE LIFERAFT



WITH LAUNCH & LIFERAFT AWAY YOU ARE READY TO USE IT.

TUG ON THE PAINTER UNTIL THE LIFERAFT INFLATES & PULL IT ALONGSIDE.

5 RIGHTING UPTURNED LIFERAFT



IF THIS SMALL LIFERAFTS WILL BREAK FREE, INFLATE AND FLOAT TO THE SURFACE.

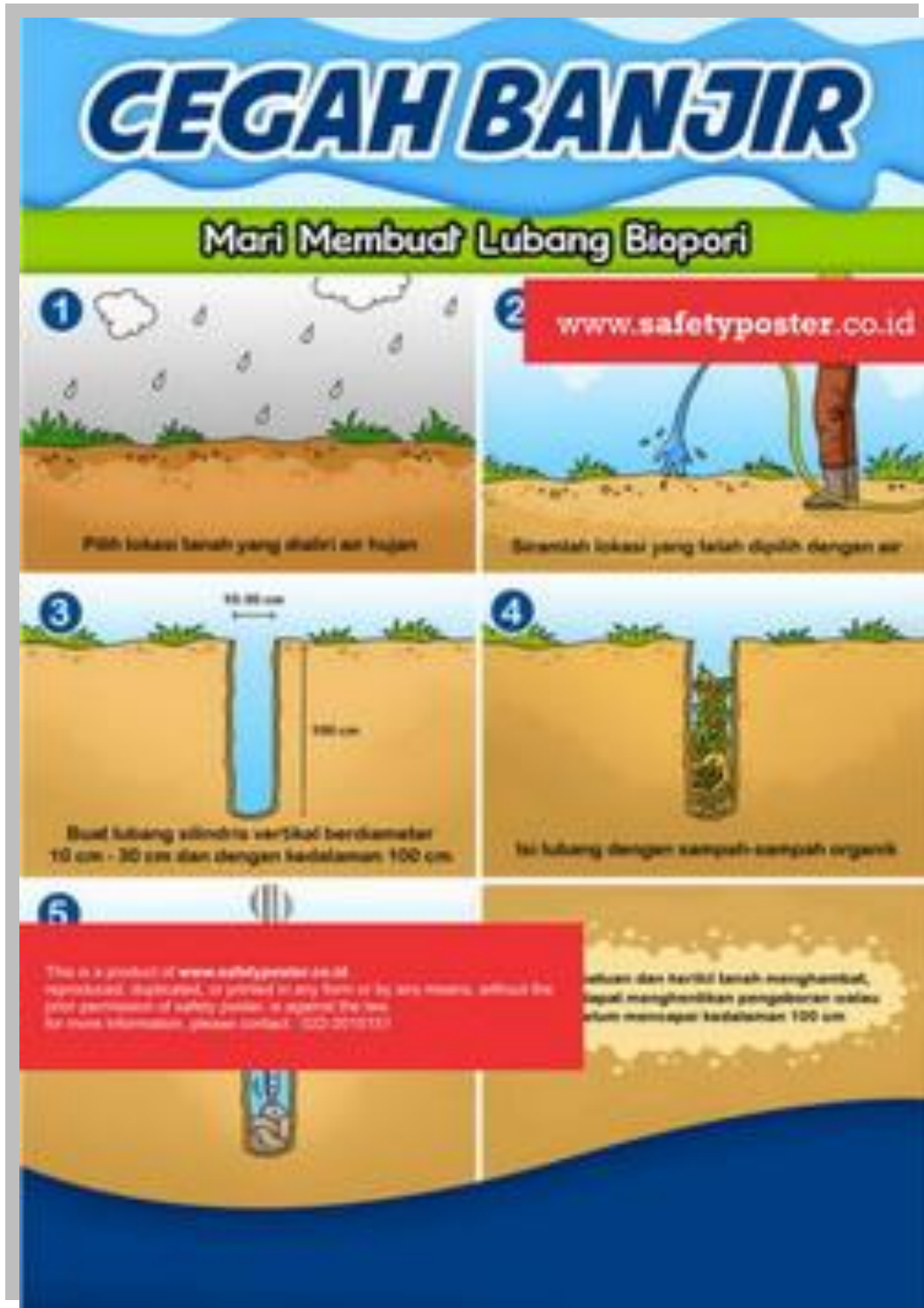


PULL

LEAN BACK

This is a product of www.safetyposter.co.id reproduced, distributed, or printed in any form or by any means, without the prior permission of safety poster, is against the law. For more information, please contact: T. 022-2015151

SP281



SP282



SP283



SP284



SP285



SP286



SP287



SP288



CARA MENANGANI KORBAN SENGATAN LISTRIK !!

www.safetyposter.co.id

- 1. JANGAN MEMBAKUSI/REMI DARI SENGATAN**



Jangan sentuh korban atau sumber listrik, apabila mardrasah, gunakan materi yang tidak dapat menghantarkan arus listrik untuk memindahkan korban, seperti kayu atau tali.
- 2. PINDAHLAH ALIRAN LISTRIK**



Matikan arus listrik melalui pemutus tenaga atau pemutus tenaga sekering.

Apabila mardrasah, gunakan materi yang tidak dapat menghantarkan arus listrik untuk memindahkan korban seperti kayu atau tali.
- 3. GEGERA BERKUNCI BAGIAW MEDIS**


- 4. JANGAN MENYENTUH KORBAN**


- 5. LINGKUNGAN KORBAN DALAM GELIMET DAN TINGGAL BERKAWAN MEREKA DAMPAK BANTUAN TERA**



This is a product of www.safetyposter.co.id reproduced, distributed, or printed in any form or by any means, without the prior permission of safety poster, is against the law. For more information, please contact: 022-2015151

SP289



SP290



SP291



SP292



SP293



SP294

